

Viega.

CONNECTED
IN QUALITY.

viega

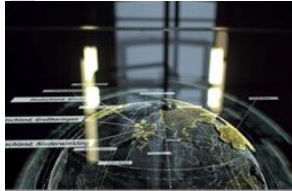


Viega World-wide

over 120 years,
4th and 5th generation



World market leader in
press connecting
technology



10
Manufacturing
locations



75
Export Countries
worldwide



4,500+
employees



19,000+
products



23
seminar centres

21
Sales Subsidiaries
in 5 Continent

Viega today: a global player in installation technology

viega

A tradition of Innovation



Brass fittings for the beer industry



Outlet and overflow valves for washbasins, sinks and baths



PE-Xc-piping systems and gunmetal connectors



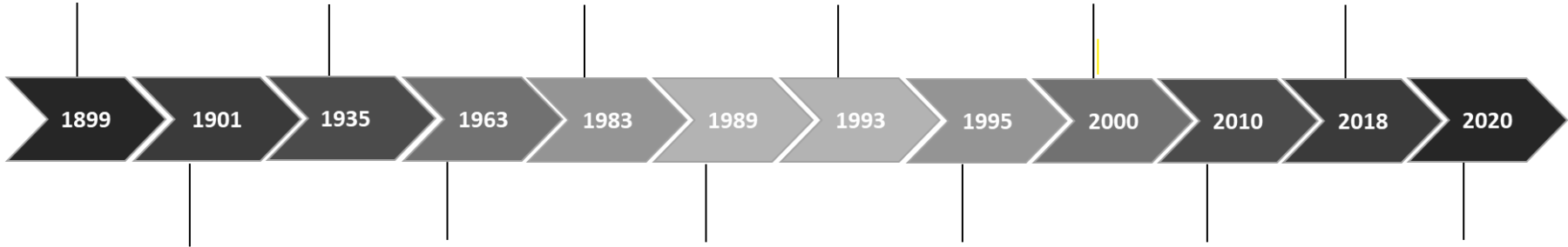
Pre-wall installation equipment



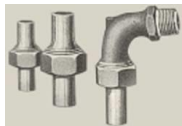
Introduction of the SC-Contur



Smart Cistern



Installation materials for water piping



Soldered fittings made of copper/Plastic sanitary products



Launch of the Viega press technology



Copper press connection technology



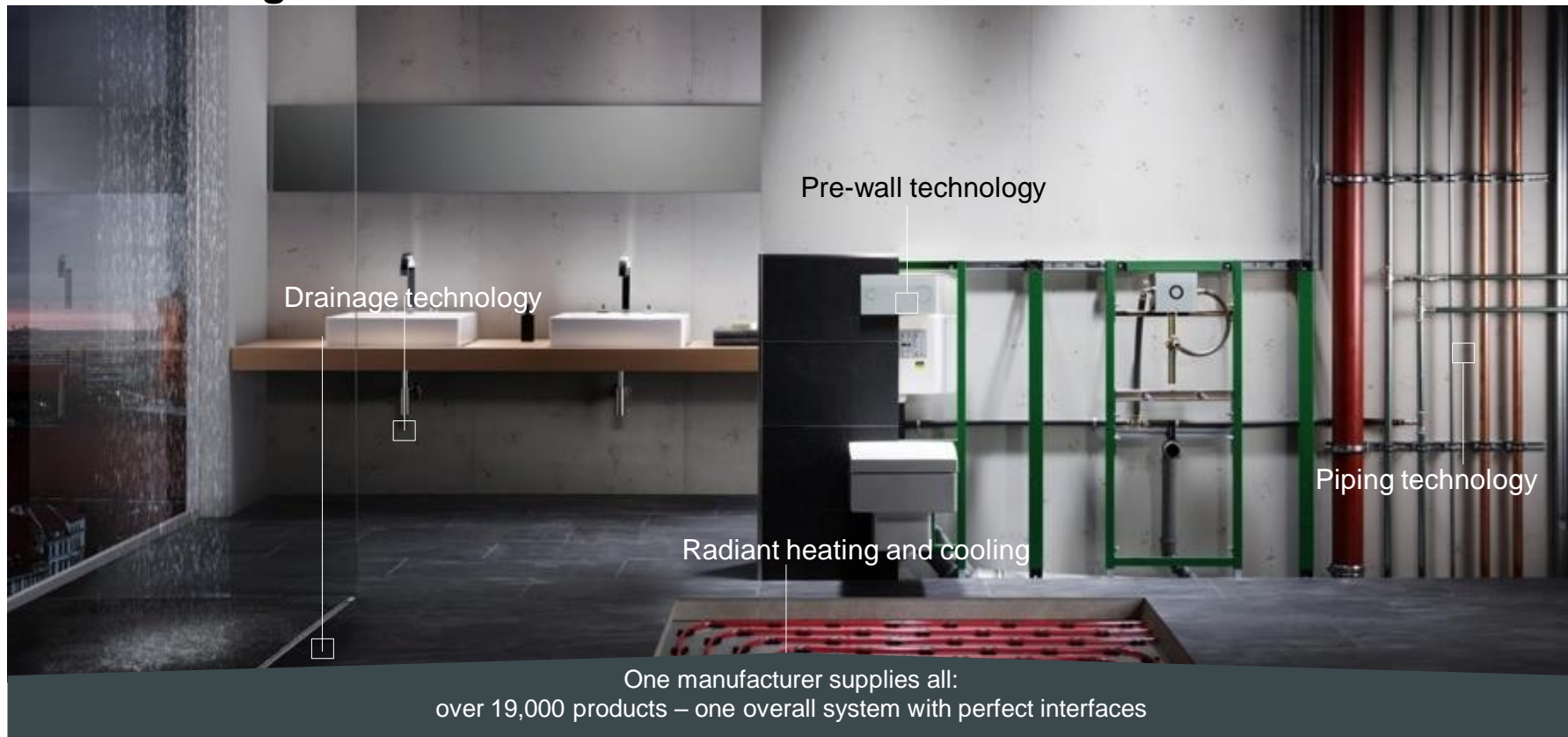
Raxofix plastic piping system



Speedpress



Product Range

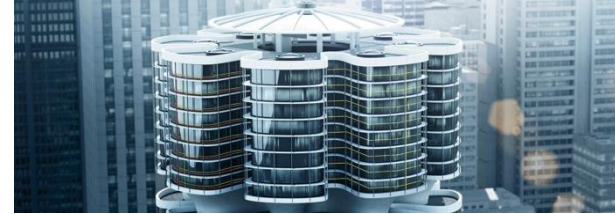


Products

100% reliability – an overview

Areas of application

- Buildings Technology, Industrial Facilities, Shipbuilding, Supply Technology



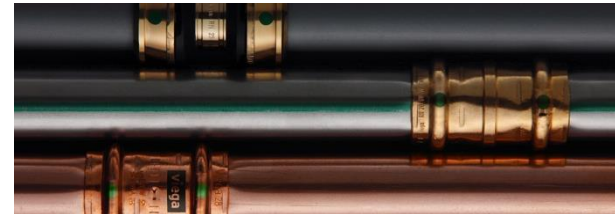
Range

- 19,000+ products
- Piping and connection technology, radiant heating and cooling, pre-wall and flushing technology, drainage technology



Materials

- Exclusive use of high-quality materials: stainless steel, plastic, gunmetal, silicon bronze, copper, brass, steel

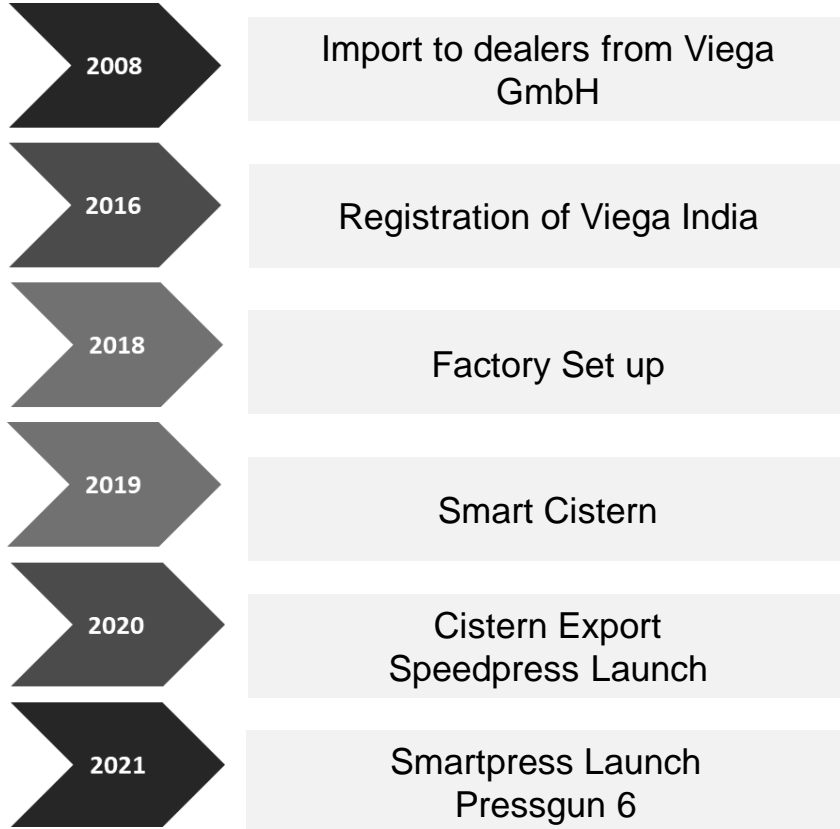


Viega India

viega



Viega in India



Sanpress Inox

Piping and connection technology

- Pipes and press connectors made of stainless steel
- Highest safety thanks to Viega SC-Contur
- For drinking water installations and many other areas of use
- Stainless steel pipes using 1.4401 material available
- Sealing element used in fittings – EPDM
- Max. Operating pressure: 16 bar
- Max. Operating temperature: 110° C
- Applications:- Drinking water installations/ Industrial applications
Compressed air/ Technical Gas

○ DN 15

○ DN 100

A complete system for installation using stainless steel only



Speedpress

Piping and connection technology

- Plastic piping system for drinking water and heating installations
- Connectors of PPSU with Copper Sleeve
- Highest standards thanks to Viega SC-Contur
- Simple handling
- Sealing element used in fittings – EPDM
- Material: PE-RT (single layer), PE-RT II /Al/ PE-RT II (multilayer)
- Single Layer: Operating Temperature: 70 ° C, Max. Operating pressure: 8 Bar
- Multi Layer: Operating Temperature: 80 ° C, Max. Operating pressure: 10 Bar

○ d 16 mm ○ d 25 mm

Very economical and versatile



Smartpress

Piping and connection technology

- Flow-optimized press connector systems with multi-layer pipes for potable water and heating installations as well as gas installations
- Safe and fast processing without calibration of the pipe ends through O-ring-free press technology in all dimensions
- Based on the tried-and-tested and extremely durable materials of stainless steel and gunmetal
- Sealing element used in fittings – EPDM
- Material: PE-Xc/Al/PE-Xc
- Multi Layer: Operating Temperature: 80 ° Max. Operating pressure: 10 Bar

○ d 32 mm ○ d 63 mm

Combines the advantages of metallic piping systems with those of a plastic system



Prevista Smart Cistern

Pre-wall and flushing technology

- Easy to install and maintain
- Design Freedom
- Huge Variety of Flush plates, all flush plates compatible with all cisterns
- High-quality materials and straightforward design, winner of several awards
- Awarded highest score on WELL certification
- Flush valves fill in 27 secs @ 3 bar pressure
- Cisterns available in 80mm and 100mm thickness

The perfect combination of high-quality design and modern technology



Shower Channels and floor drains

Drainage technology

- Modern, Minimalistic and user-friendly designs
- Installation is easy and flexible.
- Supplemented by high-quality design grates
- Fire protection solutions
- Can be used in all types of floor construction
- Approved according to DIN EN1253

High drainage capacity, many areas of use



Quality testing

Harder testing than in real life

100+

strict testing methods simulate practical use prior to the market launch

100 %

reliability through multiple checks before, during and after manufacture

R&D

Facility with up-to-date technology to test the products and to bring the best to the world

A range of quality checks to ensure the highest safety standards in practical applications



Product Certifications

Quality as an international standard



Viega products are approved throughout the world and fulfill and exceed national and international standards and regulations

After Sales Service

An overview of the focus on the customer



Call Centre

Helpdesk representative to register the complaints from the customer



CRM System

Web application for Call registration for record and quality purpose



Trained Technicians

Pan India Presence of Technicians to visit sites on the complaint call

Reach out to us on 9099965787

Our Network

Presence in India

viega



Our Presence in India

We have a network of dealers across India.

NORTH

Agra, Ambala, Amritsar, Bathinda, Chandigarh, Delhi, Faridabad, Ghaziabad, Gurugram, Hoshiarpur, Jaipur, Jalandhar, Jammu, Kaithal, Kanpur, Karnal, Kapurthala, Lucknow, Ludhiana, Mathura, Mohali, Panchkula, Patiala, Phagwara, Rohtak, Sriganaganagar, Noida

WEST

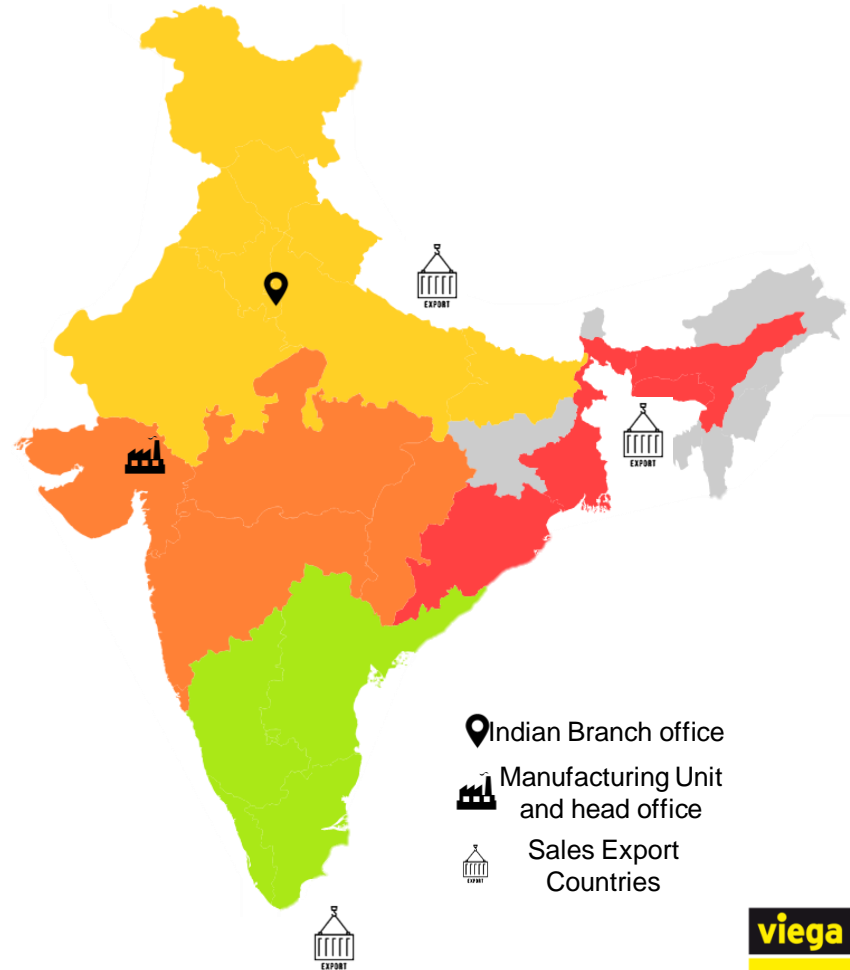
Ahmedabad, Bharuch, Gandhidham, Indore, Kolhapur, Mumbai, Nagpur, Pune, Raipur, Rajkot, Surat, Vadodara, Valsad

SOUTH

Bangalore, Chennai, Cochin, Coimbatore, Davangere, Ernakulam, Hyderabad, Kozhikode, Madurai, Salem, Tirupur, Vellore, Vijayawada, Vishakhapatnam

EAST

Guwahati, Kolkata, Ranchi



REFERENCES

Global

viega

Dali Museum, St. Petersburg, FL, USA
© Architekten, Design: HOK

References

Unusual examples

Bharati-Research Station, Antarctica

- Sanpress Inox
- Sanpress Inox G
- Prestabo
- Easytop



© Architects: IMS Ingenieurgesellschaft / bof architekten / m+p consulting;
Photographer: Rakesh Rao/NCAOR

References

Unusual examples

Statue of Liberty

- Profipress (according to US standard)



The Pentagon, Washington, D.C

- Profipress (according to US standard)

References

Offices and residential buildings

The Squire, Frankfurt, Germany

- Sanpress Inox
- Prestabo



Porsche Design Tower, Sunny Isles Beach, FL, USA

- Profipress (according to US standard)
- Megapress (according to US standard)
- Megapress G (according to US standard)

References

Hotels

Sheraton New York Times Square Hotel, New York

- Profipress (according to US standard)



W Retreat & Spa Bali Seminyak, Bali, Indonesia

- Viega Eco Plus
- Visign flush plates

References

Health sector

Paediatric Oncology Centre, Moscow, Russia

- Sanpress Inox
- Viega Eco Plus
- Advantix



Ahuja Medical Center, Beachwood, OH, USA

- Profipress (according to US standard)

References

Shipbuilding

Royal Caribbean International's Serenade of the Seas

- Profipress



Meyer Werft shipyard, Papenburg, Germany

- Profipress
- Seapress
- Sanfix Fosta

References

Industry

Audi AG, Werk Böllinger Höfe works, Germany

- Sanpress Inox



Zentis GmbH & Co. KG, Germany

- Sanpress Inox
- Profipress

You can check more industrial references on the below Link
<https://bit.ly/3sYvsmG>

References

Industry

Kaasveredeling Kruijt, Netherlands

- Sanpress Inox
- Profipress



JEA Northside Generating Station, USA

- Sanpress Inox (according to US standard)

You can check more industrial references on the below Link
<https://bit.ly/3sYvsmG>

References

Industry

ALTANA Pharma AG, Constance, Germany

- Sanpress Inox



Brauerei C. & A. Veltins GmbH, Germany

- Sanpress Inox



You can check more industrial references on the below Link
<https://bit.ly/3sYvsmG>

REFERENCES

INDIAN

viega



References

High Rise

Fortune Vivanta

- Location- Gujarat
- Products Supplied- Polymer Piping system



Raheja Viveria



- Location- Mumbai
- Products supplied- Sanpress Inox

References

High Rise

ITC Royal Bengal

- Location- Kolkata
- Products Supplied- Bathtub Fittings, and Prewall



Sunteck

- Location- Mumbai
- Products supplied- Prewall

References

High Rise

Candeur 40

- Location- Hyderabad
- Products Supplied- Prewall



Montana

- Location- Mumbai
- Products supplied- Prewall

References

High Rise

Trump Tower

- Location- Delhi
- Products Supplied- Prewall



Birla Estate



- Location- Bangalore
- Products supplied- Prewall

References

Unusual

AIIMS, Delhi, Apollo Vizag and Mumbai

- Application- Drinking Water



Indian Navy

- Products- Megapress and Sanpress Inox

References

Industry

Adani Mundra, Solar Industry

- Industry type- Solar
- Year of execution- 2019
- Location- Mundra
- Product Supplied- Sanpress Inox
- Application- Hot water circulation



SOCIETY[®]



Society Tea

- Industry type- Process Plant
- Year of execution- 2019
- Location- Mumbai
- Product Supplied- Sanpress Inox
- Application- Drying of Moist air during the process

References

Industry

SCHOTT Kiasha & schott Glass

- Industry type- Process Plant
- Year of execution- 2018,19,20,21,22
- Location- Panoli, Guj
- Product Supplied- Sanpress Inox
- Application- Viols Manufacturing,Rotary chambers



THE TIMES OF INDIA

Times of India

- Industry type- Process Plant
- Year of execution- 2019,20
- Location- Mumbai
- Product Supplied- Sanpress Inox
- Application- Process line for compressed air

References

Industry

Nestle Plant, Baddhi

- Industry type- Food and beverages
- Year of execution- 2012
- Location- Baddhi, Himachal Pradesh
- Product Supplied- Sanpress Inox and Prewall
- Application- Drinking water supply to the plant



MMTCM-PAMP, Sohna

- Industry type- Government
- Year of execution- 2012
- Location- Sohna, Haryana
- Product Supplied- Profipress
- Application- Potable water for industrial use

References

Industry

Sheela Group, Noida

- Industry type-Mattress
- Year of execution- 2014
- Location- Noida
- Product Supplied- Presstabo
- Application- Fire sprinkler



**MANN +
HUMMEL**

Mann & Hummel, Gurgoan



- Industry type- Liquid and Air filtration
- Year of execution- 2012
- Location- Gurgoan, Haryana
- Product Supplied- Sanpress Inox
- Application- Water supply to the machinery

References

Residential Sector



L&T - Mumbai



Hiranandani - Mumbai



Oberoi Realty - Mumbai



M3M - Gurgaon



Unitech - Gurgaon



Sobha - Bangalore



Prestige - Bangalore



Wadhwa - Mumbai



Rustomji - Mumbai



Jaypee - Noida



K Raheja - Mumbai



Kolte Patil - Pune



Kasturi - Pune



Shree Ji Heights - Rajkot



Assotech - Noida

References

Hospitality Sector



Goa,
Bangalore,
Pune,
Vadodara,



Mumbai,
Alibaug



THE RITZ-CARLTON®
Bangalore



Pune



Delhi Aerocity



Goa



Mumbai,
Gurgaon,
Bangalore



Goa



Kolkata
Chandigarh



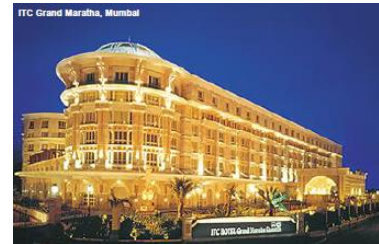
Gaziabad



Chandigarh



Taj, Delhi



ITC Grand Maratha,
Mumbai

References

Commercial Sector



F1 Track Greater Noida



Indore Airport



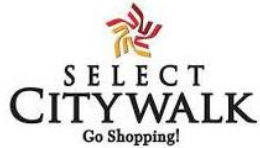
Pune, Mumbai, Vadodara



Phoenix mall - Mumbai



Sahara – Gurgaon, Lucknow



Select City - Delhi



DLF Promenade - Delhi



Coca Cola - Gurgaon



Linked In - Gurgaon



Dil toh roaving hai

MakeMyTrip - Gurgaon



HCL - Noida



JCB - Faridabad



Office, Gurgaon



NIIT – Greater Noida



TCS - Gurgaon



WIPRO Mumbai



CONNECTED IN QUALITY.